

How to program 99 private channels

The attached file is the programming software. There are two solutions for program the private 99 channel.

Solution 1 as the below steps.

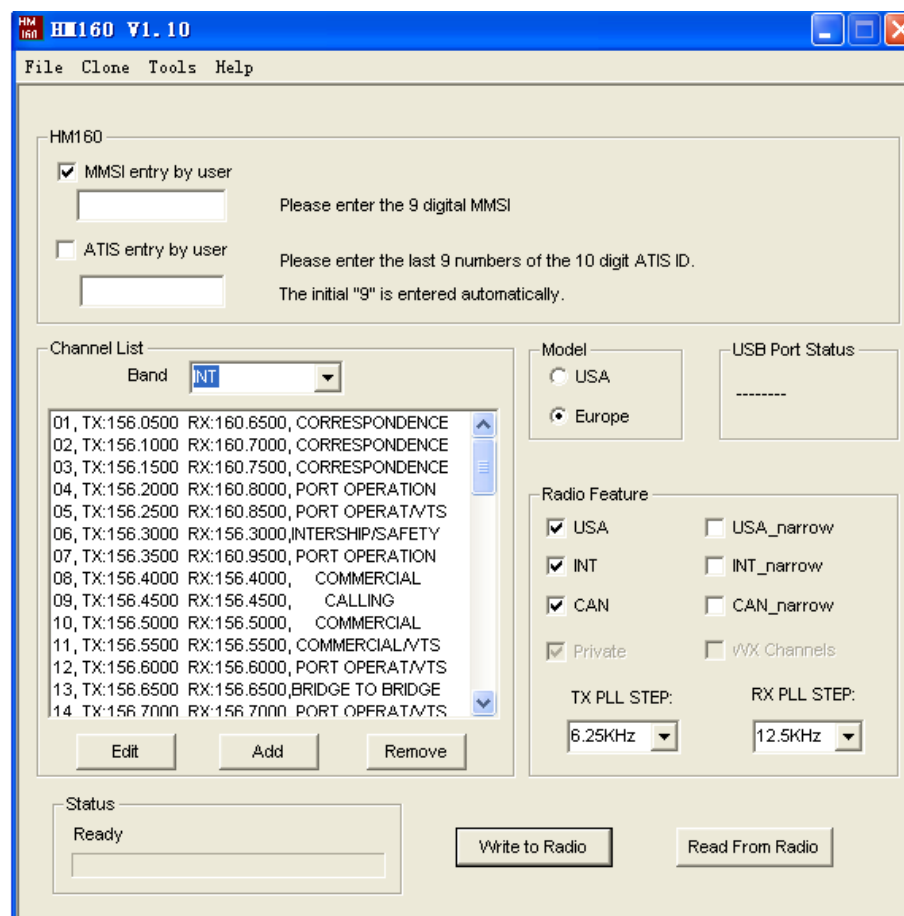
Step1: open the programming software on your computer,

Step2: press the key 'DW /TRIW' continually meanwhile turn the power on, when the 'pc' shown on the LCD screen you can stop pressing the key 'DW /TRIW'

Step3: connect your HM160 VHF to your computer via USB cable.

Step4: On the interface of programming software, choose 'Europe' model, then click the 'private' channel, then click button 'Add' and you can program the corresponding private channel according to your needs, finally click button 'OK', the private channel will save to your VHF. It's the same step for other private channels.

Below pictures as a reference.



HM160

☒ MMSI entry by user
Please enter the 9 digital MMSI

☐ ATIS entry by user
Please enter the last 9 numbers of the 10 digit ATIS ID.
The initial "9" is entered automatically.

Channel List

Band: **INT**

01, TX:156.0500	USA	RESPONDENCE
02, TX:156.1000	USA	RESPONDENCE
03, TX:156.1500	CAN	RESPONDENCE
04, TX:156.2000	Private	RESPONDENCE
05, TX:156.2500	RX:160.8500, PORT OPERAT/VS	
06, TX:156.3000	RX:156.3000, INTERSHIP/SAFETY	
07, TX:156.3500	RX:160.9500, PORT OPERATION	
08, TX:156.4000	RX:156.4000, COMMERCIAL	
09, TX:156.4500	RX:156.4500, CALLING	
10, TX:156.5000	RX:156.5000, COMMERCIAL	
11, TX:156.5500	RX:156.5500, COMMERCIAL/VS	
12, TX:156.6000	RX:156.6000, PORT OPERAT/VS	
13, TX:156.6500	RX:156.6500, BRIDGE TO BRIDGE	
14, TX:156.7000	RX:156.7000, PORT OPERAT/VS	

Model: ☐ USA ☒ Europe

USB Port Status: -----

Radio Feature

☒ USA ☐ USA_narrow

☒ INT ☐ INT_narrow

☒ CAN ☐ CAN_narrow

☒ Private ☐ WX Channels

TX PLL STEP: 6.25KHz RX PLL STEP: 12.5KHz

Edit Add Remove

Status: Ready

Write to Radio Read From Radio

Channel Setup Dialog

Name: 0 0

Usage: PORT OPERATION

Tx Freq: 157.85000 MHz

Rx Freq: 157.85000 MHz

Mode: ☐ Duplex ☒ Simplex

OK Cancel

define by your needs

Solution 2 as the below steps

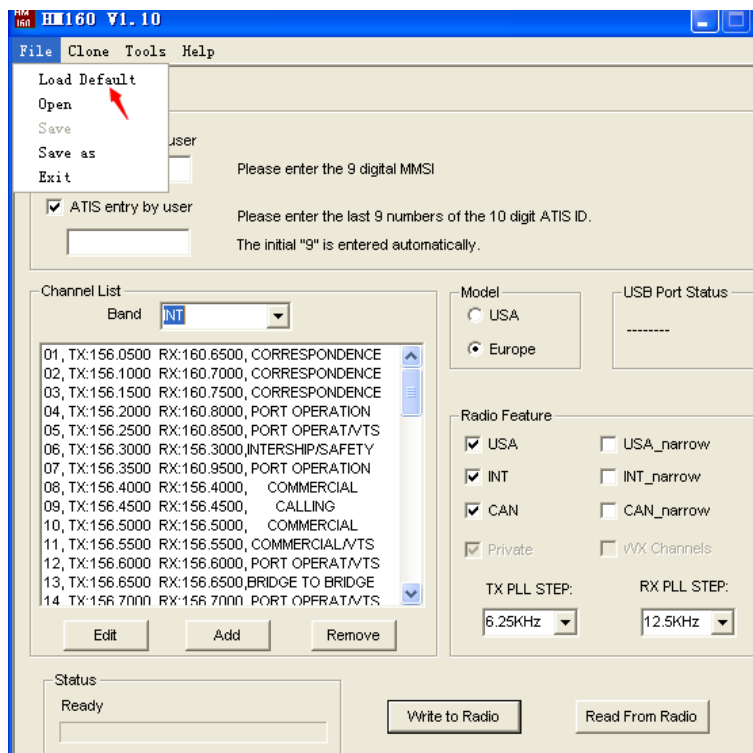
Step1: open the programming software on your computer,

Step2: press the key 'DW /TRIW' continually meanwhile turn the power on, when the 'pc' shown on the LCD screen you can stop pressing the key 'DW'

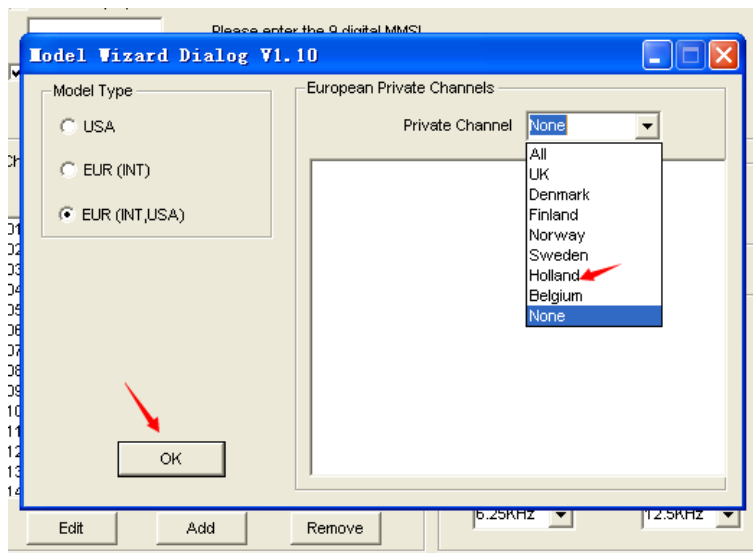
/TRIW'

Step3: connect your HM160 VHF to your computer via USB cable

Step4: click 'file' option, choose the 'load default' option



Then will pop up the below picture



Choose 'Holland' channel, then click 'ok' button, back to the below interface, you can find your local private channel at once.

HM160

☒ MMSI entry by user

Please enter the 9 digital MMSI

☒ ATIS entry by user

Please enter the last 9 numbers of the 10 digit ATIS ID.
The initial "9" is entered automatically.

Channel List

Band

Private

31,TX:157.7500 RX:162.1500 MARINA

37,TX:157.8500 RX:157.8500 LEISURE

Edit

Add

Remove

Model

☐ USA

☒ Europe

USB Port Status

Radio Feature

☒ USA

☐ USA_narrow

☒ INT

☐ INT_narrow

☒ CAN

☐ CAN_narrow

☒ Private

☐ WX Channels

TX PLL STEP:

6.25kHz

RX PLL STEP:

12.5kHz

Status

Ready

Write to Radio

Read From Radio